

APPLICATIONS

Hydrophilic nonwoven (special for feminine hygiene products) can be used as a top sheet for different types of feminine hygiene products (e.g. panty liners, sanitary napkins, period pants, etc.) to provide comfort, hygiene, and protection during menstruation and other feminine hygiene needs. They are designed to absorb menstrual blood to prevent leaks and maintain hygiene, manage lochia after childbirth, provide extra protection during lighter flow days or for vaginal discharge, as well as absorb light urinary incontinence.



CONTACT US

1215, Sunbeam Centre, 27 Shing Yip St, Kwun Tong, Kowloon, Hong Kong

Phone: +852 2387 8926

Email: info@nask.hk

Web: <https://www.nask.hk>

Researched, Designed
& Manufactured in
Hong Kong

POWERED BY
NASK[®]
NANO
INVISIBLE TO INVINCIBLE

R&D at Hong Kong Science &
Technology Park and Production at
its Advanced Manufacturing Centre



HYDRO- PHILIC NONWOVEN



SPECIAL FOR FEMININE HYGIENE PRODUCTS

NCA-11

KEY FUNCTIONS & BENEFITS

FAST ABSORPTION

Innovated by hydrophilic nanofibers to soak up menstrual fluid quickly and reduce the risk of leakage, thus providing immediate comfort and confidence, especially for those with heavy menstrual flow

LOW REWET

Innovated by fluid redistributing nanofibers with multiple channels to ensure that the surface of the top sheet remains dry after absorbing fluid, thus preventing moisture from re-emerging and hence enhancing user comfort and reducing irritation

HEMOLYTIC PROPERTY

Break down viscous fluid and blood clots and hence accelerate absorption

GERM-KILLING

Innovated by germ-killing nanofibers to prevent infections and maintain a healthy vaginal environment by killing harmful germs on the spot

ACIDITY REGULATION

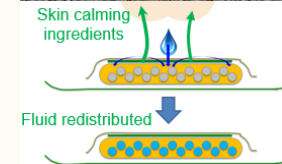
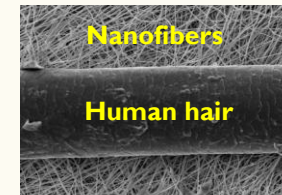
Maintain an acidic pH to help prevent bacterial growth & promote skin health

SKIN CALMING

Release skincare plant extracts to relieve vaginal irritation, itching and odors

ADVANCED TECHNOLOGIES

NANOFIBER TECHNOLOGY



- ✓ Redistribute fluid quickly by nanofibers having multiple hydrophilic channels, thus achieving fast absorption and low rewet
- ✓ Formulated with skincare plant extracts in dry nanofibers, thus maintaining their stability without the use of preservative
- ✓ Trigger release of skincare plant extracts upon moisturization due to the short diffusion distance within the nanofiber, thus leading to quick skincare effect
- ✓ Develop a high concentration gradient at the interface between the top sheet and your skin due to the high specific area of the nanofibers, thus achieving an incredibly high skin penetration and hence skincare effect
- ✓ Patented technology to kill over 99% of germs, thus preventing infections potentially

